

## Air Unit

2008

Modular system of elements in mink colour leather effect laminated wood. The units (fronts/top) are covered by 6mm tempered painted glass as per samples in the bright or satin version. 12mm tempered extralight glass side (not for suspended version U06, U06R, U06V) painted in the part corresponding to the unit's side. Version with open unit with 12mm tempered extralight glass top. The inside is made of leather effect laminated wood in mink colour. Bright anodised aluminium metal parts. For room divider or double-sided compositions, a 6mm tempered painted glass back in the same finish of the unit is available. Modules can be placed side by side. Available versions: Suspended version, available only for U06, U06R, U06V units. Suspended version with 60/74h cm middle side, necessary to reduce the weight. Freestanding version 60/74h cm. Freestanding version 75.3h cm with open unit, available only for U01S and U02RS units. Freestanding version 91.2h cm with open unit.

Cm (L x W x H)

U06 / U06R

90 x 34.1 x 35.9

120 x 34.1 x 35.9

U06V

35.9 x 34.1 x 91.4

35.9 x 34.1 x 121.4

U01 / U02 / U02R / U02X / U03 / U04 / U05

90 x 51 x 45.1

120 x 51 x 45.1

Vassoio portacancelleria / Stationery tray

Inches (L x W x H)

U06 / U06R

35½ x 13½ x 14¼

47¼ x 13½ x 14¼

U06V

14¼ x 13½ x 36

14¼ x 13½ x 48

U01 / U02 / U02R / U02X / U03 / U04 / U05

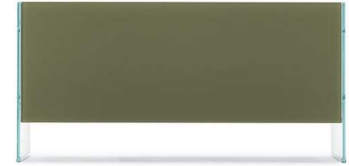
35½ x 20¼ x 18

47¼ x 20¼ x 18

Vassoio portacancelleria / Stationery tray

41.4 x 22.5 x 12.5  
U01S / U02RS  
90 x 51 x 35.1  
120 x 51 x 35.1

16½ x 9 x 5  
U01S / U02RS  
35½ x 20¼ x 14  
47¼ x 20¼ x 14



## Finishings

### Glass



Bright black



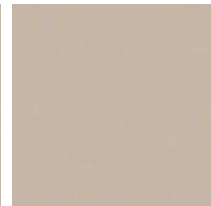
Bright blue-grey



Bright cadet blue



Bright cement



Bright champagne



Bright dark grey



Bright green-grey



Bright liquorice



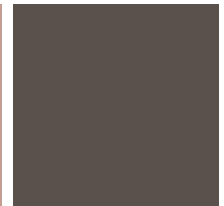
Bright mink



Bright olive



Bright rose powder



Bright taupe



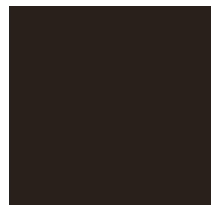
Bright white



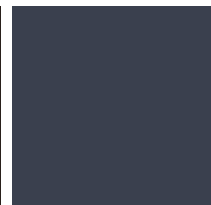
Extralight



Leather effect laminated wood



Satin black



Satin blue-grey



Satin cadet blue



Satin cement



Satin dark grey



Satin green-grey



Satin liquorice



Satin mink



Satin olive



Satin rose  
powder

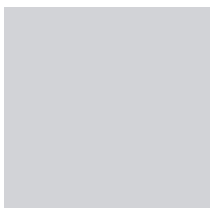


Satin taupe



Satin white

## **Metal**



Anodised  
aluminium